

REGIONAL STAKEHOLDER FORUM ON SOCIO-ECOLOGICAL RESEARCH NEEDS IN THE BLUE MOUNTAINS

Purpose, Agenda, Expectations



Mary Rowland, USDA Forest Service, PNW Research Station
Blue Mts. Regional Stakeholder Forum, 4 March 2015, Portland, OR



Objectives

- Obtain feedback about high priority research topics for natural resource management in the Blue Mtns., with emphasis on public lands.
- Review outcomes of high priority areas identified during local stakeholder forum in La Grande.
- Develop additional topics and/or “researchable questions” and document the rationale for their inclusion.



Objectives

- Use information to guide development of new research collaborations and funding proposals
 - under umbrella of the Blue Mountains working group of the Mountain Social-Ecological Observatory Network (MtnSEON)
- **Emphasis on integrating social science with ecological studies in new research collaborations.**



Agenda

- ❖ Provide overview of MtnSEON
- ❖ Introduce the Blue Mtns. Working Group of MtnSEON
- ❖ Describe key research topics and associated questions for Blue Mtns.
- ❖ Report results from La Grande stakeholder forum
- ❖ Elicit input from regional stakeholders on topics
- ❖ Summarize key points and share final thoughts

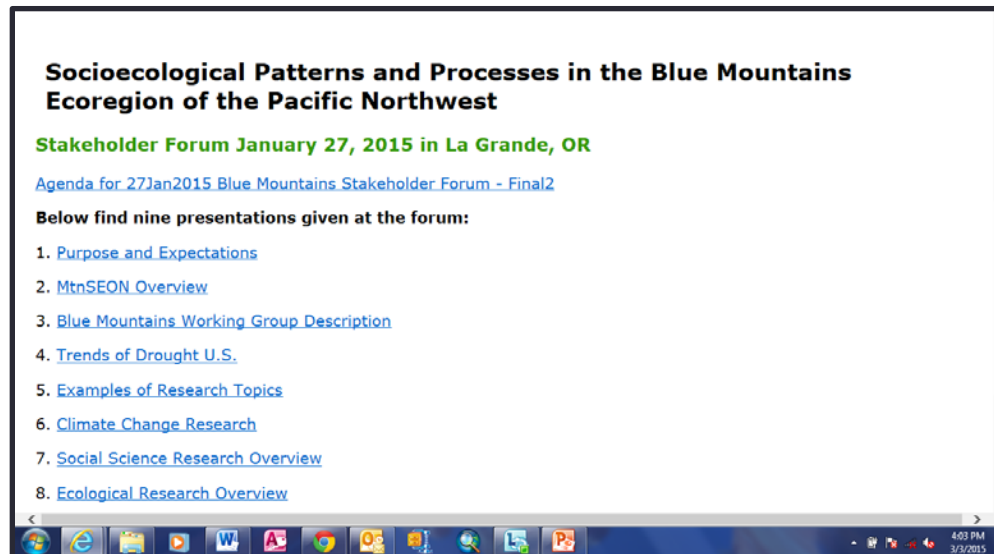
Process for Input

- Stakeholder “around-the-room” input on natural resources topics for the Blue Mountains (2-3 minutes per person)
- Group discussion of research – what is being done that is useful and relevant, future research topics
- Further input. Summarize, and wrap up



Expectations

- Stakeholder input and follow-on scientists' meeting outcomes will be documented in meeting notes, with key points summarized and distributed to all attendees.
- Input will be considered in future Blue Mtns. MtnSEON collaborations.



Expectations

A photograph of a forest clearing with tall grass and a person walking in the distance. The scene is bright and sunny, with a clear blue sky and a dense forest of tall evergreen trees in the background. A person is walking away from the camera in the middle ground, and a dark object, possibly a mailbox or a small structure, is visible in the foreground.

- Not all input will result in new research. Funding and staffing shortages will limit some types of new research, especially in the short-term.
- Input will be considered in long-term planning for funding and staffing to implement new research.

Expectations

- Some new research, including any proposals for large-scale manipulative studies, will require follow-on meetings with stakeholders to ensure proper design, consensus, and funding.
- No current research will be curtailed or phased out.



Expectations

- Future research will follow the model of past and current research in the Blue Mountains:
 - Multi-disciplinary (integration of multiple resource disciplines and uses)
 - Multiple partners (state, private, federal, tribal, university)
 - Credible (peer-reviewed, refereed journal publications)
 - Management focus and management partnerships



Thank You

